

VIY5-600

Ground Penetrating Radar

User friendly and low cost system for diverse application. VIY®5-600 is suitable for both simple detection of underground utilities and complex geophysical investigations.

With VIY®5-600, you can quickly detect position and depth of metallic and non-metallic objects:

- metal utilities, including pipes and cables
- non-metallic pipes, including PVC and asbestos cement ones
- concrete sewer systems
- buried tanks and barrels
- subsurface objects (voids, cracks, heterogeneous inclusions);



VI45-600 GPR



Wide Operation Possibilities

- Simplified interface for basic applications
- Wide range of abilities in standard interface



Robust Compact Foldable Cart

- Lightweight design
- Folds up very quickly
- Built-in odometer
- Can be used on rough terrain
- Has a screw-bolt for GPS receiver fixing
- Simple adjustable antenna mount
- Built-in battery compartment



Sealed Lead Acid Battery

- Easy replacement
- Worldwide available battery
- Standard form factor battery



Connections

- USB connections
- Easy to use push-pull connectors
- Endurance sealed connectors
- Simple setup of WiFi
- Standard extender can be used



GPR Antenna

- Shield antenna systems
- Same antenna can be used with cart or in manually mode
- Exchangeable bottom protector
- Original "Telbin" technology
- Built-in tilt sensors
- Robust fiberglass body
- Low power consumption
- More than 8 hours of continuous operation



Any Windows Computer

- Any Windows-based computer is applicable
- The antenna directly connects to PC



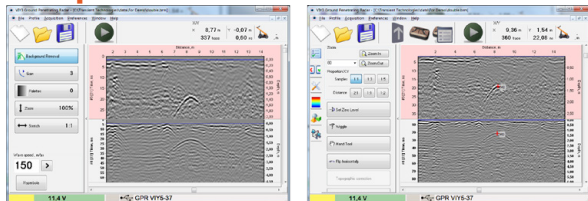
Any External GPS Receiver

- GPS receiver connects directly to GPR antenna
- GPS can operate as trigger device

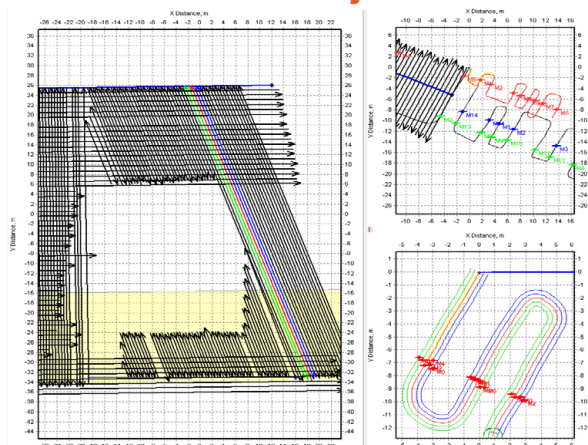


VIY5-600 GPR

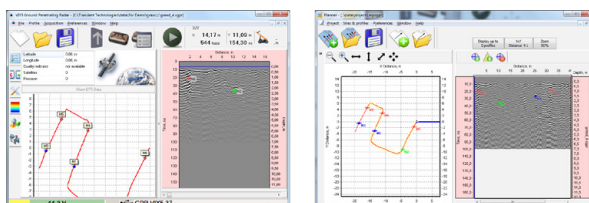
Simplified or Advanced Interface



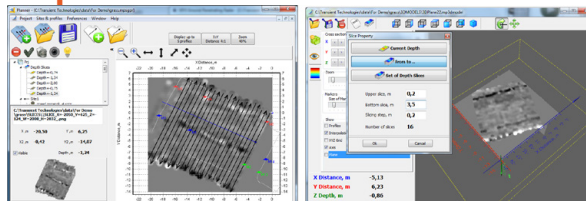
Arbitrary Positions of GPR Profiles in Project



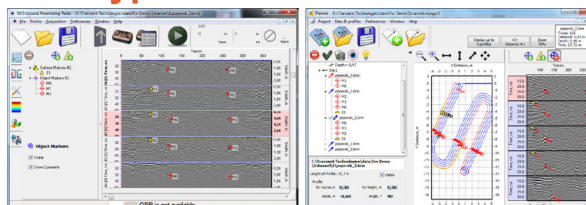
Visualization of GPS Track



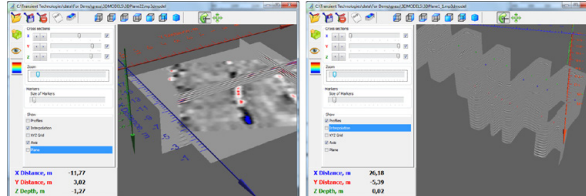
Depth Slices



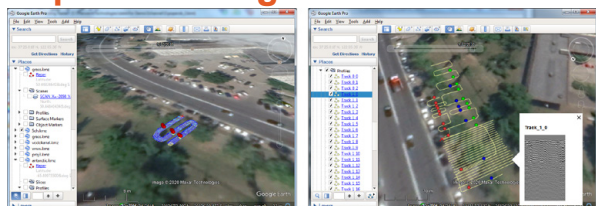
Two Types of Markers



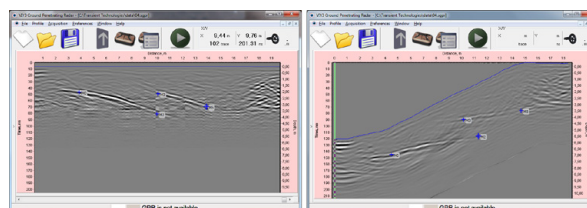
3D Visualization

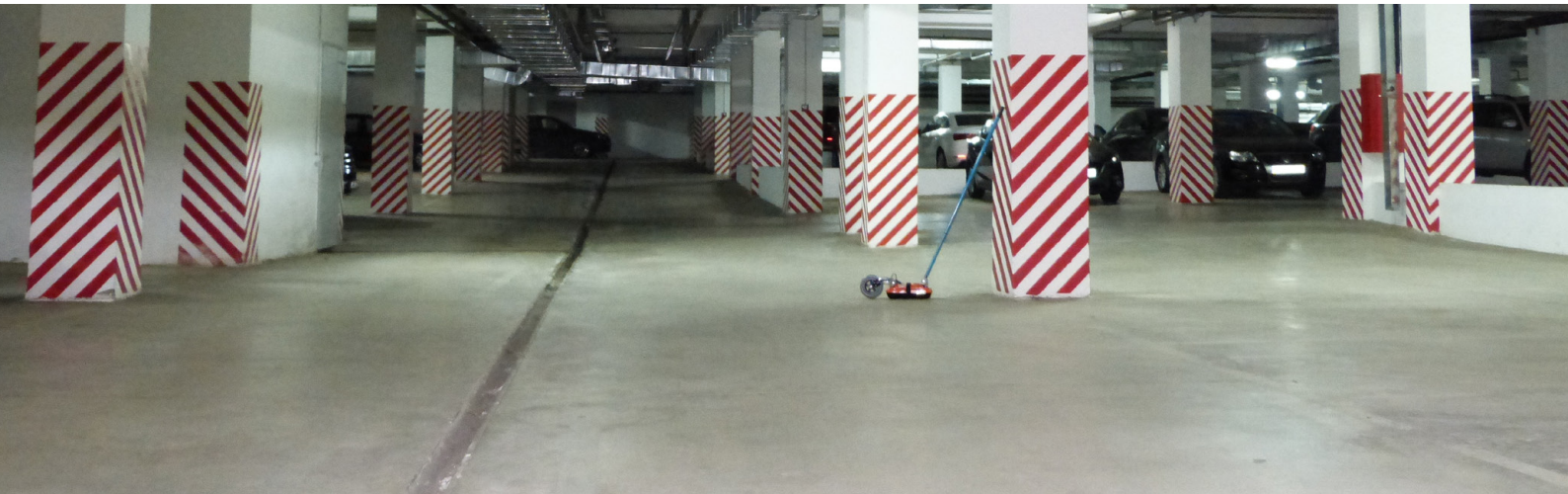


Export to Google Earth



Automatic Topographic Correction





VIY[®]5-600 Specifications

Antenna frequency	600 MHz
Survey window	34, 51, 68, 85 ns
Depth of sounding up to (determined by soil properties)	3,5 m
Spatial resolution (better than)	0.14 m
Trigger mode	single, internal, external
Dimensions of antenna, L x W x H	305 x 210 x 95 mm
Dimensions of cart, working mode L x W x H	900 x 460 x 1050 mm
Dimensions of cart, folding mode L x W x H	900 x 460 x 300 mm
Weight of antenna	1,8 kg
Weight antenna with cart	15 kg
Operating temperature range	-20°C to +40°C
Operation time	not less 8 then hours